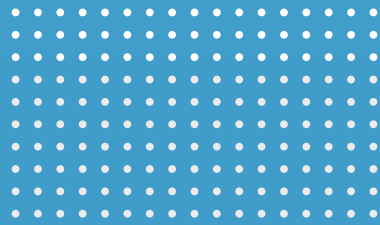


*Fiber laser
cutting machine*



LaserTWO

COST-EFFICIENT LASER CUTTING

Why LaserTWO?

- Lowest cost per part
- Full range of powers available
- Reliable performance
- Optional covers and shuttle bed



LVDGROUP.COM



LaserTWO

COST-EFFICIENT LASER CUTTING

HIGHLIGHTS

Cost-effective cutting

LaserTWO is the ideal solution for bringing laser cutting in-house for greater quality control, higher productivity and profits, without compromising your budget.

Designed with a modular, no-nonsense approach, LaserTWO strikes the perfect balance between price and functionality. The fiber laser is available in three modular configurations to fit your price-performance needs.



NO COVERS SIMPLICITY MEETS FUNCTIONALITY

The most basic LaserTWO model offers laser cutting at the lowest price point and combines high cutting speed and precision. This single bed machine is available for non-CE markets only.



LOCAL COVERS SAFETY FIRST

Local covers and light guards ensure operator safety while maintaining high performance. The cutting zone has a cover that can be opened for maintenance, check-ups, part evacuation. Windows at the sides ensure visibility of the laser cutting process. With a handheld control unit the operator can safely move all axes for setup.

NC focus cutting head

Featuring auto focus with 200 mm focusing lens, capacitive height sensor and crash protection, LaserTWO provides the flexibility to process a wide variety of materials and thicknesses.

Modular machine

LaserTWO can be built up from a basic no-cover version to a fully enclosed model to match different price-performance needs.

Reliable performance

The machine construction and key components such as power source, cutting head, control and drive system assure proven, reliable performance.

Quick scrap removal

Scrap bins underneath the exhaust unit can easily be removed.



FULL COVERS AND SHUTTLE BED MAXIMISED EFFICIENCY

The full cover version with integrated shuttle tables takes performance to the next level, making loading and unloading fast and practical, and enabling seamless integration with LA Load automation for even greater efficiency.

OPTIONS

Shuttle table for enhanced productivity

Add the option “full covers and shuttle tables” to provide maximum operator safety and increase machine productivity. The shuttle table changeover is completed in just 30 seconds.

MOVit Load-Assist (LA)

With shuttle tables, LaserTWO perfectly combines with LVD's LA Load automation to transfer unprocessed sheets to the machine shuttle table.



DISCOVER
LaserTWO

SPECIFICATIONS

LaserTWO 3015	
Machine specifications	
Maximum sheet size	3050 x 1525 mm
X-axis travel	3185 mm
Y-axis travel	1560 mm
Z-axis travel	80 mm
Maximum sheet weight on table	900 kg
Maximum positioning speed X-Y	110 m/min
Maximum positioning speed Z	30 m/min
Repetitive accuracy	+/- 0,05 mm
Positioning accuracy*	+/- 0,10 mm
Shuttle bed	on full cover version
Machine dimensions no cover version (excluding light guards, filter and chiller)	
Length	5000 mm
Width	2900 mm
Height	1780 mm

Laser power	3 kW	6 kW	12 kW
Maximum cutting performance			
Mild steel	15 mm	25 mm	30 mm
Stainless steel	12 mm	25 mm	30 mm
Aluminium	12 mm	25 mm	30 mm
Copper	6 mm	8 mm	15 mm
Brass	5 mm	8 mm	15 mm

Specifications subject to change without prior notice.

* Achievable workpiece accuracy depends on the type of workpiece, pre-treatment and sheet size, as well as other variables. According to VDI/DGQ 3441.

“With a full range of powers available, the system gives you the flexibility to bring laser cutting in-house and optimise your cost per part.”